

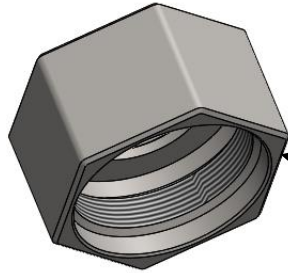


Technical specification

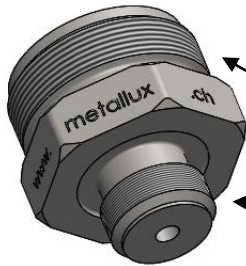
DQ 3.2.1
All. 7 del 26.02.10
Pag. 1 di 1



5 x COS0585
FKM DKAR 00014 V9004
12.42 x 1.68 mm



1 x DMX0007
Stainless steel
Retaining screw
M27



1 x DMX0065
Stainless steel
Sensor housing
M24
1/4" Gas



Operating recommendations:

Respect the tight torque value, depending on the pressure range. (see table below)

Run a mechanical stabilization cycle giving five times pressure up to 1,2 times nominal range.

Pressure [bar]	Pressure [psi]	Closing torque [Nm]	Closing torque [lb-in.]
≥0.5 ... ≤5.0	>7 ... ≤72	0.9	7.96
>5.0 ... ≤20.0	>72 ... ≤290	1.1	9.73
>20.0 ... ≤100.0	>290 ... ≤1450	1.6	14.16
>100.0 ... ≤600.0	>1450 ... ≤8700	1.8	15.93
>600.0 ... ≤1000.0	>8700 ... ≤14500	2.1	18.58

Related document:

Pressure sensors Mounting Proposal (3D_MEM75X-MEM77X.pdf).

Sold in North America By:

Servoflo Corporation

75 Allen Street

Lexington, MA 02421 Tel: 781-862-9572

www.servoflo.com / info@servoflo.com

Pagina	Toll. Generale	Materiale	Scala	D	16.03.2015	RDM 15069
1 di 1	-	-	-	C	23.12.2013	Updated
Sensor Housing + Kantseal				B	03.05.'13	(RDM13-127)
				A	07.09.10	Release
Beginner's kit for ME501/504/505/662/663/651/ 667/670/75x/77x/78x/79x				Ind.	Data	Nota
				Elaborato P.Satta		Data 16.03.2015
		Controllato A.Greppi		Data 16.03.2015		
				Codice Metallux:		
				KIT0400		